

PRODUCT NUMBER
93689-YXX-XXLF

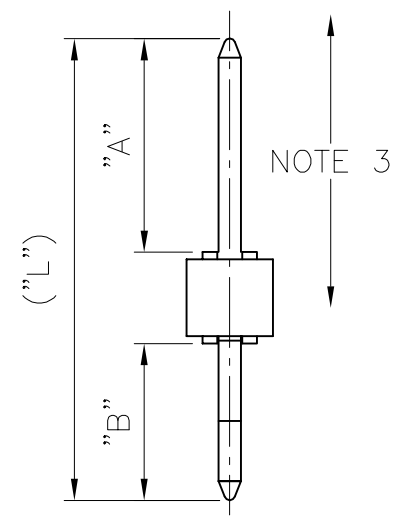
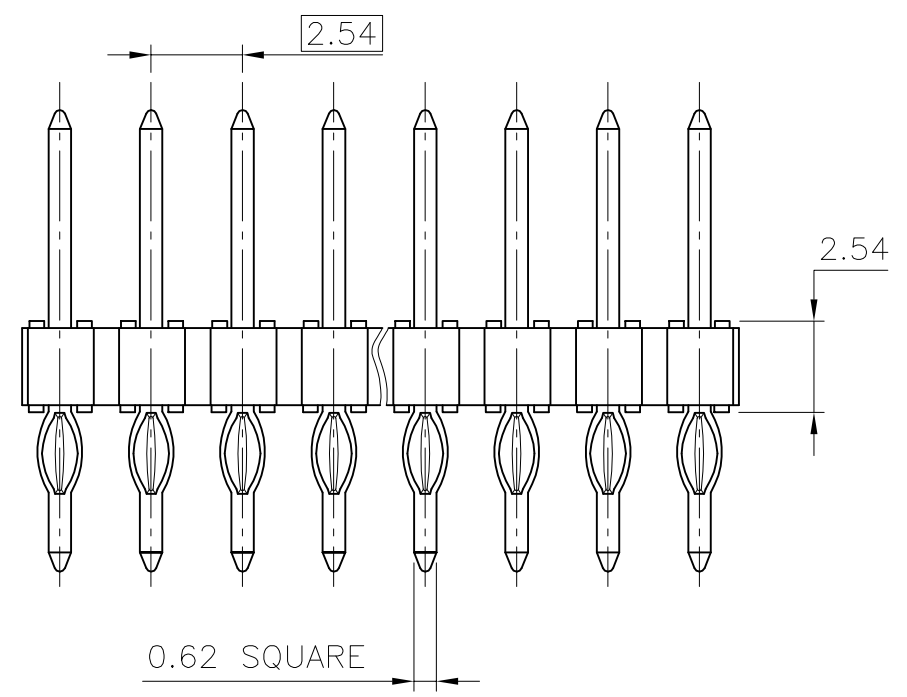
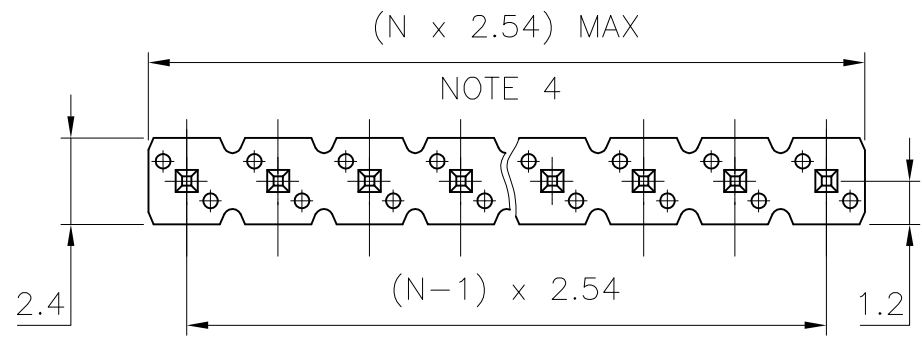
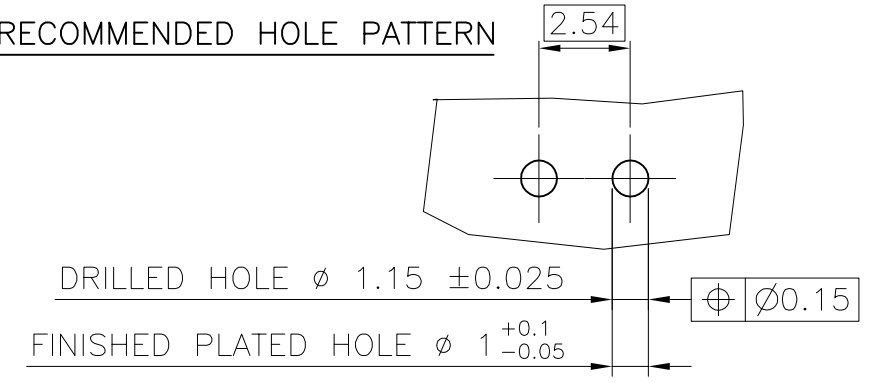
PLATING, SEE TABLE

LEAD FREE OPTION
SEE NOTE 6 & 7

TOTAL NB OF POS
02 TO 36

PIN STYLE	DIM "A" REF	DIM "B" ±0.3	DIM "L" REF
01	7.5	4.7	14.78
02	10.14	4.7	17.40
03	5.68	4.7	12.83
04	14.89	4.7	22.15
05	8.3	4.7	15.44
06	6.8	3.6	12.9

RECOMMENDED HOLE PATTERN



NOTES:

- 1 - HOUSING MAT'L : HIGH TEMPERATURE THERMOPLASTIC. UL94V-0 COLOR: BLACK
- 2 - PIN MATERIAL : PHOSPHOR BRONZE
- 3 - 9N MIN RETENTION IN EITHER DIRECTION
- 4 - TO DETERMINE DIMENSIONS :
N = NUMBER OF POSITIONS PER ROW
EXAMPLE : 8 POS PER ROW, N x 2.54 = 20.32mm
- 5 - STANDARD PACKAGING IN POLYBAGS
- 6 - FOR LEAD FREE PART NUMBER ADD "LF" SUFFIX AT THE END OF PART NUMBER
- 7 - "LF" MEANS THAT THE PRODUCT IS RoHs COMPLIANT THEN MEETS EUROPEAN UNION DIRECTIVES AND OTHER COUNTRY REGULATION AS DESCRIBED IN GS-22-008

XXXXX-4XXLF	3.05µm TIN OVER 1.27µm Ni MIN	
XXXXX-1XXLF	0.76µm GOLD/GXT OVER 1.27µm Ni MIN	1.0µm TIN OVER 1.27µm
XXXXX-4XX	3.05µm TIN-LEAD OVER 1.27µm Ni MIN	
XXXXX-1XX	0.76µm GOLD/GXT OVER 1.27µm Ni MIN	1.0µm TIN-LEAD OVER 1.27µmMIN
PLATING NUMBER	CONTACT AREA	PRESS FIT TAIL AREA

mat'l. code		surface ISO 1302 ✓	tolerance ISO 406 ISO 1101	projection	product family BSTIK
ltr	ecn no	dr	date	tolerances unless otherwise specified	title
H	F08-0148	RTR	08.03.31	angles .X ±0.3	HEADER P-FIT SINGLE ROW
				linear .XX ±0.15	
C	F10137	LMU	01.02.08	xxx ±0.05	scale 5:1
D	F20116	LMU	02.01.15	dr COMPAGNON J 95.07.25	
E	F05-0251	LMU	05.09.15	engr JMC 95.07.24	
F	F06-0196	LMU	06.06.20	chr	
G	F07-0142	LMU	07.02.23	appd JMC 95.07.25	
sheet index	revision sheet				dwg no 93689 type CUSTOMER Drawing sheet 1 of 1 size A3